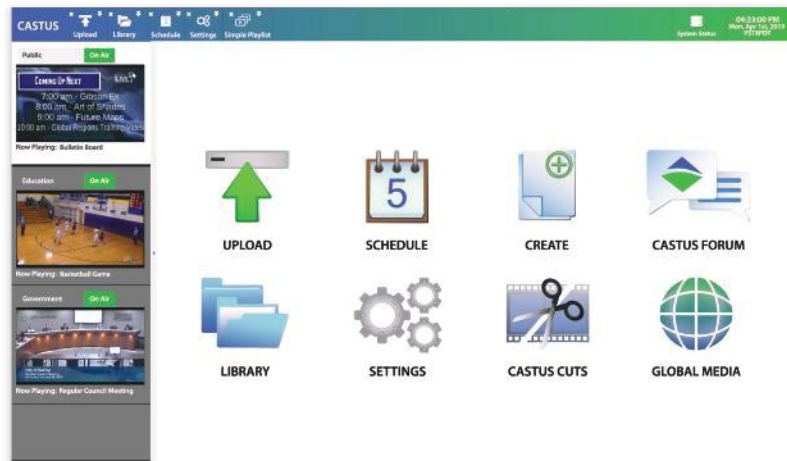

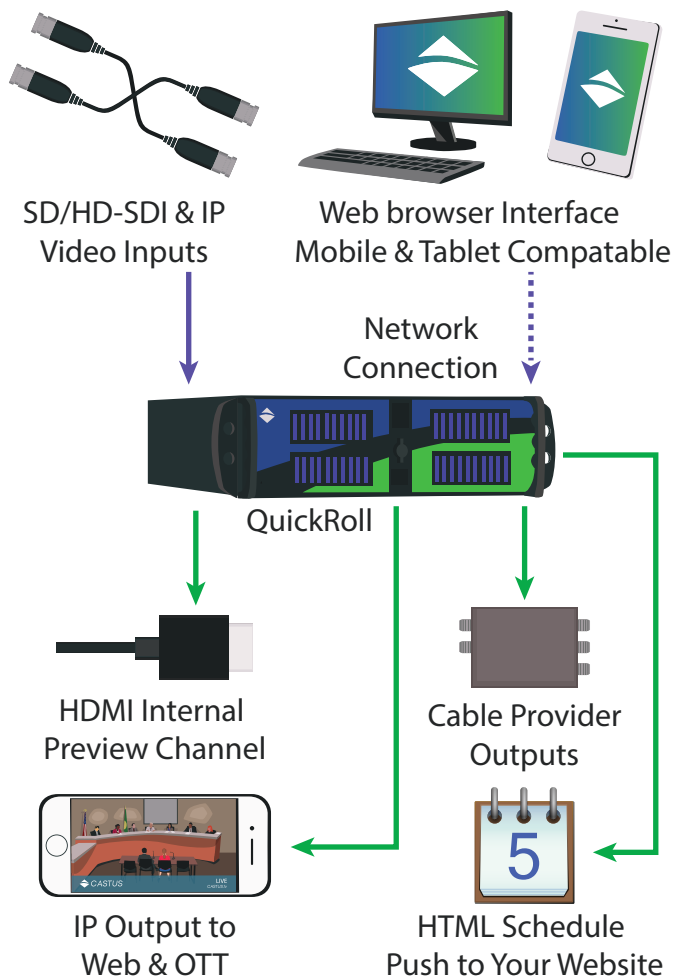




'TV Station in a Box'- Capture, Schedule, Playout, & Stream



Web browser based user interface. 



OVERVIEW

CASTUS QuickRoll is a powerful, multi processing, multi channel, video scheduling server; it is feature rich, reliable and cost effective. The QuickRoll offers multiple SD/HD-SDI inputs and outputs with additional IP multi-cast outputs for OTT streaming, enabling you to upload, schedule, and play almost any file format, zero transcoding. The server provides full support for closed captioning, providing a compliant signal to cable, web, mobile, and social media for both live and Video On Demand content. QuickRoll has quickly become the popular solution for broadcasters.

FEATURES

- Secure user logins with password permissions & restrictions
- Stream to Facebook Live™ & YouTube Live™
- Zero transcoding - HD/SD compatible
- Easy 'Click & Stick' scheduling
- Easy to create & edit bulletin boards
- Video editing on our web based non-linear timeline editor 'CASTUS Cuts'
- Add graphic overlays on IP & SDI outputs
- Automatic audio volume normalization
- Confidence monitors built in
- Create text & RSS crawls
- Automatic background music detection during slides
- Automatically fills gaps in schedules with 'Default Item'
- HDMI preview channel
- Digital SD/HD-SDI & IP inputs with router control
- Create show run reports
- Reliable support with C4 & forum access

KEY HIGHLIGHTS

- ALL NEW redesigned version 5 user interface
- Support for Closed Captions; live, side car & embedded
- Stream to multiple destinations simultaneously
- Stream 24/7 365
- User login with permissions
- Independent channel output settings
- Linux operating system
- Web browser based user interface

OUTPUTS

Video & Audio Output	Digital SD/HD-SDI uncompressed video with embedded audio
IP Output	NDI, MPEG2 Transport Stream with MPEG2 or H.264 video and AAC, AC3 or MPEG audio
Preview Output	HDMI Output for internal preview channel

INPUTS

Inputs	SD/HD-SDI, IP, NDI and RTMP over ethernet 3.5mm line-in audio input
Supported Formats	MPEG2, MPEG4, vob, m2ts, mov, avi, mp4, m4a, wav, mp3, AAC & AC3

STORAGE

Options	8TB, 16TB, 24TB or 32TB
Redundancy	RAID 5 or RAID 6 per client request
Operating System	120GB SSD internal drive for CASTUS & Linux OS
Integrates & Supports	QuickStream VOD, Link Electronics ACE captioning products & SCTE-35

SPECIFICATIONS

Operating System	Linux CASTUS OS
Control Interface	Web Interface (Firefox or Chrome)
Network Connection	(2) 1 gigabit connections, optional 10 GbE card
Data Center Integration	NTP
Controls	BlackMagic IP/SDI routing switcher, Knox routing switcher
Uploading Content	HTTP Web Interface & FTP
Closed Captioning	EIA-608 (Analog Line 21) and CEA-708 (Digital TV)
Total HD/SD inputs/outputs	8/8 - (16) I/O's max configuration
Total Channel Overlay Regions	(8) 1-3 channels (6) 4 channels (2) 5+ channels

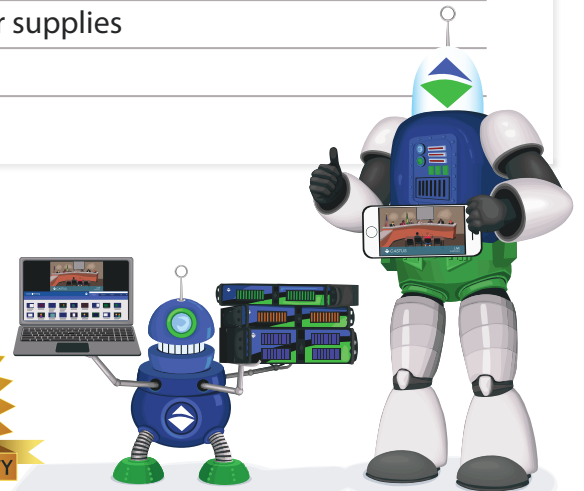
PHYSICAL

Power	200 Watts (max) based off the number of channels or I/O's
Power Consumption	Dual 600 Watt power supplies
Dimensions	19"d X 17"w X 5.5"h
Weight	40lb

CASTUS is a customer centric organization. We value our customers and promise to provide them with excellent products and reliable support. Our products have evolved over the years directly from customer feedback. We are committed to continually improving our products.



165 NE Juniper Street Suite 200 Issaquah WA, 98007



CASTUS.tv

800.215.3880