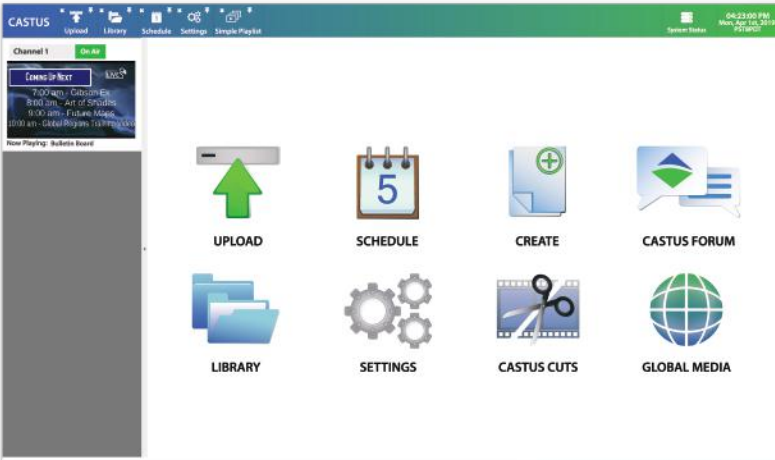
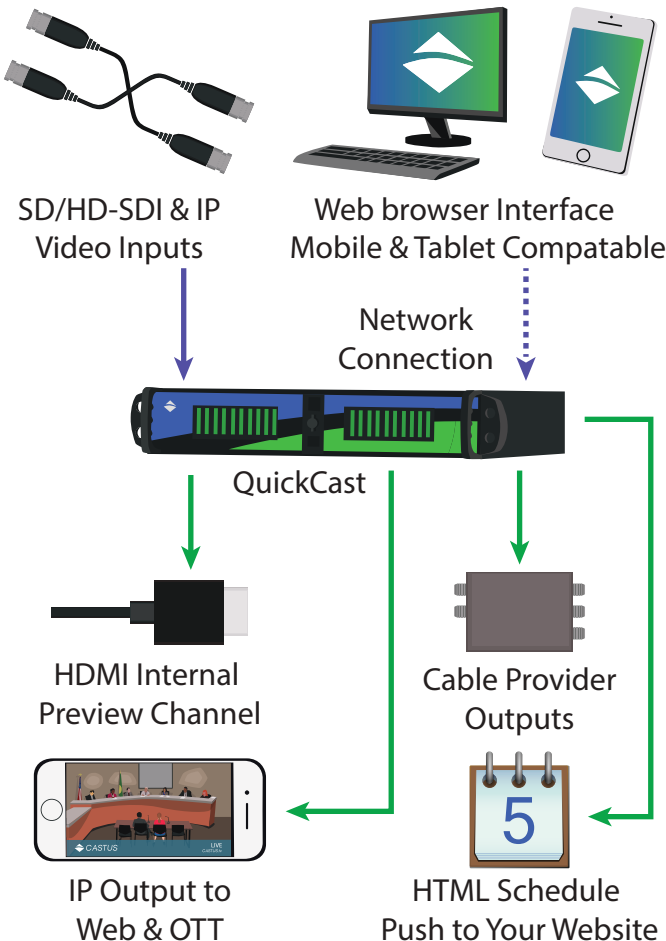




'TV Station in a Box' - Capture, Schedule, Payout, & Stream



Web browser based user interface.



OVERVIEW

CASTUS QuickCast is a powerful, multi processing, single channel video scheduling server; it is feature rich, reliable and cost effective. The QuickCast offers one SD/HD-SDI input, one SD/HD-SDI output and one additional IP multicast output for OTT streaming. You can easily upload, schedule and play almost any file format, zero transcoding. QuickCast features an easy to use, web browser based interface that is accessible from anywhere, anytime, with a real time channel monitor built in. The server offers fully supported closed captioning, providing a compliant signal to cable, web, mobile, and social media sites for both live and VOD content.

FEATURES

- Secure user logins with password permissions restrictions
- Stream to Facebook Live™ & YouTube Live™
- Zero transcoding - HD/SD compatible out of the box
- Easy 'Click & Stick' scheduling
- Easy to create & edit bulletin boards
- Video editing on our web based non-linear timeline editor 'CASTUS Cuts'
- Optional graphic overlays on IP and SDI outputs
- Automatic audio volume normalization
- Confidence monitor built in
- Text & RSS crawls
- Automatic background music detection during slides
- Automatically fills gaps in schedule with 'Default Item'
- HDMI preview channel
- Digital SD/HD-SDI & IP input with router control
- Show run reports
- Reliable support with C4 & forum access

KEY HIGHLIGHTS

- ALL NEW redesigned version 5 user interface
- Support for Closed Captions; live, side car & embedded
- Stream to multiple destinations simultaneously
- Stream 24/7 365 with CASTUS Hosting Services
- User login with permissions
- Linux operating system
- Web browser based user interface

OUTPUTS

Video & Audio Output	Digital SD/HD-SDI uncompressed video with embedded audio
IP Output	NDI, MPEG2 Transport Stream with MPEG2 or H.264 video and AAC, AC3 or MPEG audio
Preview Output	HDMI Output for internal preview channel

INPUTS

Physical Inputs	(1) HD-SDI, NDI, IP and RTMP over ethernet with a 3.5mm line-in audio input
Supported Formats	MPEG2, MPEG4, vob, m2ts, mov, avi, mp4, m4a, wav, mp3, AAC & AC3

STORAGE

Hard Drive	4TB, 6TB or 8TB - optional RAID
Operating System	120GB internal SSD for CASTUS & Linux OS

SPECIFICATIONS

Operating System	Linux CASTUS OS
Control Interface	Web Interface (Firefox or Chrome)
Network Connection	(2) 1 gigabit connections, optional 10 GbE card
Data Center Integration	NTP
Controls	BlackMagic IP/SDI & Knox routing switchers
Integrates & Supports	QuickStream VOD, Link Electronics ACE captioning products & SCTE-35
Content Introduction	HTTP Web interface & FTP
Closed Captioning	EIA-608 (Analog Line 21) and CEA-708 (Digital TV)
HD/SD Inputs	(1) included, or additional input upgrade available
HD/SD outputs	(1) SD/HD-SDI & (1) IP output
Total channel overlay regions	4

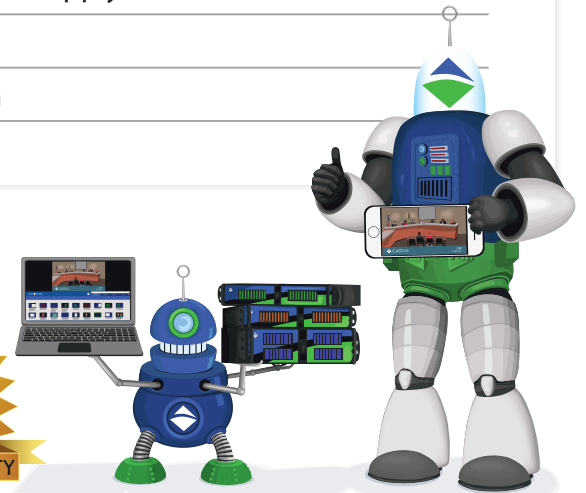
PHYSICAL

Power	Single 500 Watt power supply
Power Consumption	120 Watts
Dimensions	19"d X 17"w X 3.25"h
Weight	30 lbs

CASTUS is a customer centric organization. We value our customers and promise to provide them with excellent products and reliable support. Our products have evolved over the years directly from customer feedback. We are committed to continually improving our products.



165 NE Juniper Street Suite 200 Issaquah WA, 98007



CASTUS.tv

800.215.3880