



CASTUS

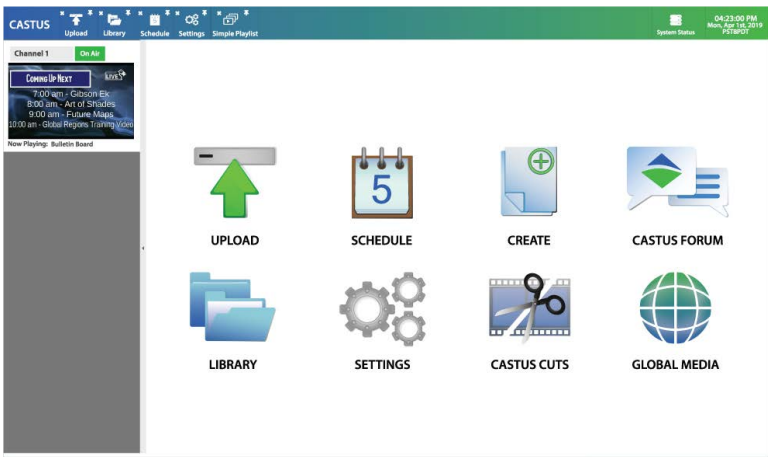
PLAYOUT SERVERS & STREAMING SOLUTIONS

QuickCast

HD/SD-SDI, IP Video & Social Media Streaming Server



'TV Station in a Box' - Capture, Schedule, Playout, & Stream



Web browser based user interface.



OVERVIEW

CASTUS QuickCast is a powerful, multiprocessing, single channel video scheduling server; it is feature rich, reliable and cost effective. QuickCast inputs & outputs are CONFIGURABLE with one of the following options:

Inputs: One HD/SD-SDI input OR one IP input (MPEG-2TS, H.264, HLS, RTMP).

Outputs: One HD/SD-SDI output & one IP simulcast output, OR two IP simulcast outputs (HLS, MPEG-2TS, H.264, MPEG-4).

All outputs share one channel.

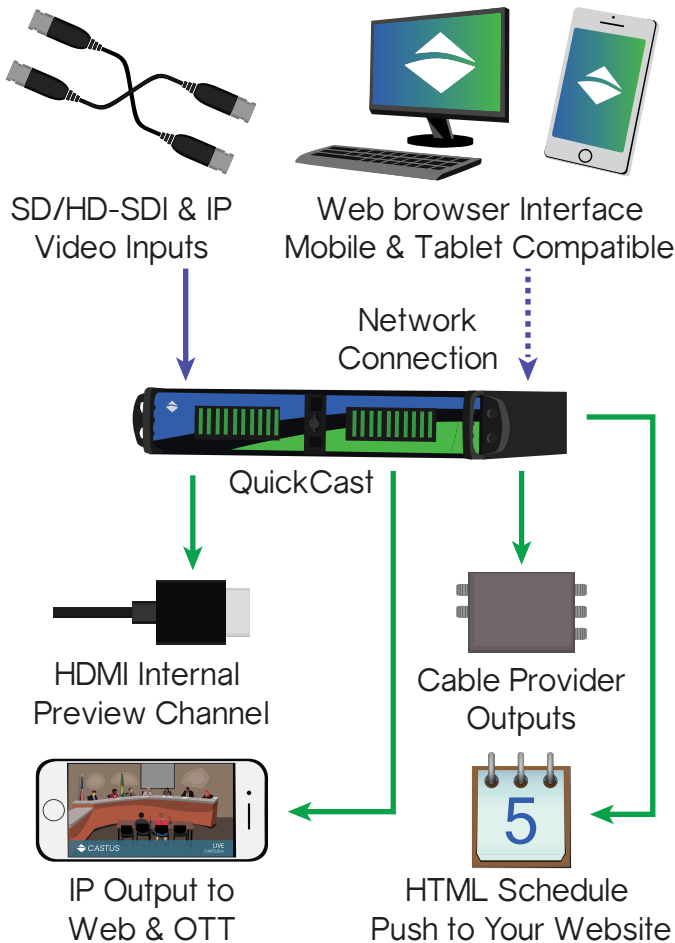
You can easily upload, schedule and play almost any file format, zero transcoding. QuickCast features an easy to use, web browser based interface that is accessible from anywhere, anytime, with a full-time channel monitor built in. The server offers fully supported closed captioning, providing a compliant signal to cable, web, mobile, and social media sites for both live and VOD content for OTT.

FEATURES

- Secure user logins with password permission restrictions
- Stream to Facebook Live™ or YouTube Live™
- Zero transcoding - HD/SD compatible out of the box
- Easy 'Click & Stick' scheduling
- Easy to create & edit bulletin boards
- Video editing on our web based non-linear timeline editor 'CASTUS Cuts'
- Optional graphic overlays on IP and SDI outputs
- Automatic audio volume normalization
- Confidence monitor built in to interface
- Text & RSS crawls
- Automatic background music detection during slides
- Automatically fills gaps in schedule with 'Default Item'
- HDMI preview channel
- Digital SD/HD-SDI & IP input with router control
- Run reports for channels programs & metadata
- **Reliable support & forum access**

KEY HIGHLIGHTS

- Support for Closed Captions; live, sidecar & embedded
- Stream to multiple destinations simultaneously
- Stream 24/7 365 with CASTUS Hosting Services- CHS
- User login with permissions
- Linux operating system
- Web browser based user interface



OUTPUTS

Video & Audio Output	Digital SD/HD-SDI uncompressed video with embedded audio
IP Output	NDI, MPEG2 Transport Stream with MPEG2 or H.264 video, HLS, RTMP for social media streaming, and AAC, AC3 or MPEG audio
Preview Output	HDMI Output for internal preview channel

INPUTS

Inputs	(1) HD-SDI, NDI from Tricaster, IP and RTMP over ethernet 3.5mm line-in audio input
Supported Formats	MPEG2, MPEG4, vob, m2ts, mov, avi, mp4, m4a, H.264 video HLS, RTMP, wav, mp3, AAC & AC3

STORAGE

Hard Drive	4TB, 6TB or 8TB - optional RAID
Operating System	120GB internal SSD for CASTUS & Linux OS

SPECIFICATIONS

Operating System	Linux CASTUS OS
Control Interface	Web Interface (Firefox or Chrome)
Network Connection	(2) 1 gigabit connections, optional 10 GbE card
Data Center Integration	NTP
Controls	BlackMagic IP/SDI & Knox routing switchers
Integrates & Supports	QuickStream VOD, Link Electronics ACE captioning products & SCTE-35 pass thru
Content Introduction	HTTP Web interface & FTP, SMB, NAS
Closed Captioning	EIA-608 (Analog Line 21) and CEA-708 (Digital TV)
HD/SD SDI Inputs or IP	(1) included, or additional input upgrade available
HD/SD SDI Outputs or IP	(1) SD/HD-SDI & (1) IP output OR 2 IP simulcast
Total channel overlay regions	4

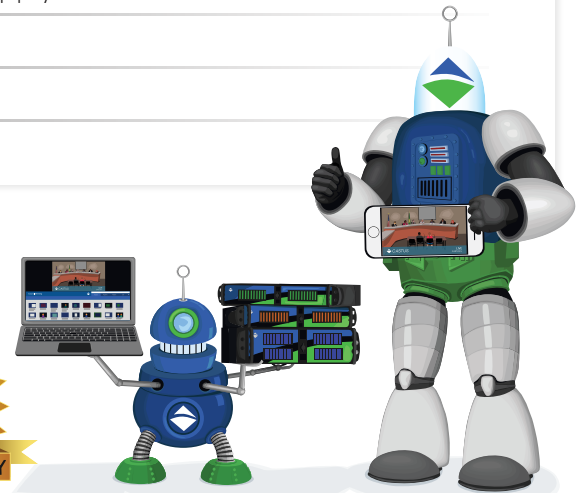
PHYSICAL

Power	Single 500 Watt power supply
Power Consumption	120 Watts
Dimensions	19"d X 17"w X 3.25"h
Weight	30 lbs

CASTUS is a customer centric organization. We value our customers and promise to provide them with excellent products and reliable support. Our products have evolved over the years directly from customer feedback. We are committed to continually improving our products.



165 NE Juniper Street Suite 200 Issaquah WA, 98027



CASTUS.tv

800.215.3880